





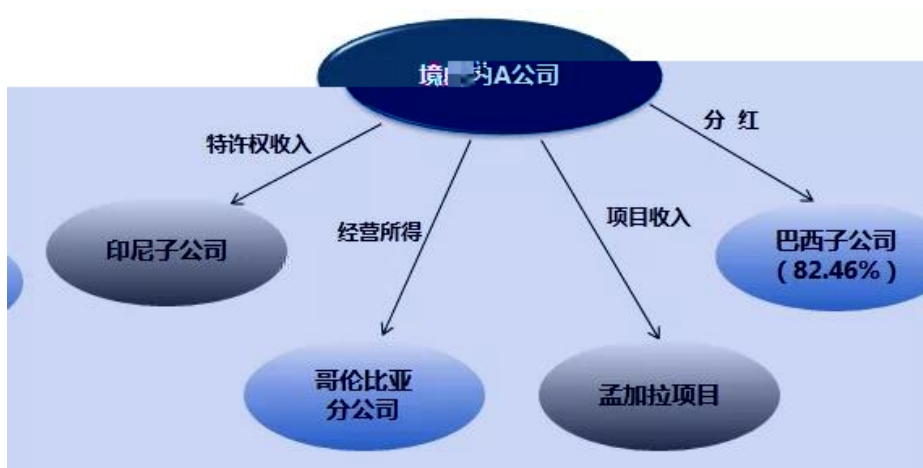
2017 84

5



A

2017



A

2017

A

1.



2017 11 -2018 7  
 120 30 A 900 9000 A 350  
 1100 125

1. =125  
 2. = 900/9900 \*1100=100  
 3. = + -  
 = 900- 350- 120-100 + 30\* 40% =342

1.

12 6 " 12 6 " / 6 183 "  
 2. 2010 75 " " "  
 " 1 " " 2 3 4  
 3 3

3. 2009 125

8 -2018 7 2017 8 -2018 7 2018 2017  
 " " A 2018

国家(地区)	境外所得纳税调整后所得(万元)	境外所得抵免限额(万元)	境外负担所得税(万元)	实际可抵免境内所得税(万元)
印度	221.00	221.00	221.00	221.00
				2.50

/ /

15%

15%

1

~

2019

87

2019 10 1 2021 12 31  
15%

15%

2019 39

10%

2

2019 87

50%

3

2016 36

4

15%

5

2019 9 30  
12

2018 10 2019 9

2019 10 1

3

6

50%

2019 39

10%

15%

50%

7 2019 9 30

1

A 2018 1 5

2019 1 5

2018 10 2019 9

50% A

2019 10 1

15%

10

2

B 2018 1 5

2019 11 1

2018 10 2019

50% B

15%

9

B 2019 11

15%

3



4

3.

06011601

2008 62

1

2

3

4.

06129902

1

2

3

5.

08019902

1986 90

2

3

4

6.

10129917

1

2

3

4

" "

1.

2.

"

"

3.

4.

"

"

5.

6.

7.

8.

9.

10.

"

"

"



2005 9 2021 12 31  
12  
=  
2022 1 1

2018 164

02.

31 2018 164 2022 1 1 2007 118 2021 12

2018 164

03.

2001 157

04.

3

3

2018 164

05.

- = { } × ÷ - ×

2018 164

06.

" " " "

07. 1999 58  
586  
586

586

08. 2012 40  
2013 103

09. 2018 164

10. 2006 10  
608



10.					2019	22	13061005	2019	71
		2019	26						
11.					2019	22	13061006		
12.	"	"					13120601		
	2019	75							
13.					2019	26	13129909	2001	39
	2019	75							
					A	B			
14.							13129912	2001	39
	2019	75							
15.					2019	26	13129915		
16.					2019	26	13129916		
17.					2019	26	13129917		
		5							
18.							15011704		
2004	134								
	1								
	2								
19.							15011705		
2008	24								
20.							15011706		
	2000	176							
21.							15011709	2010	94
	1								
	2								
	3								
	4								
22.							15011710	2000	130

101	23.				15011712	2013
	1					
	2					
4	24.				15011713	2014
	1					
	2					
	25.					15011714
		1997	52			
	26.					15011716
		1997	52			
62	27.				15011717	2008
	1					
	2					
	28.		90		1%	15011719
	2013	101				
	1					
	2					
	3					
	4					
2013	29.				15011720	
101						
	1					
	2					
	30.					15011721
	2013	101				
	1					
	2					
	31.				15011722	2013 101
	1					
	2					
	32.		90		1%	15011718 15011724
	2016	23				
	1					
	2					

23	33.	90	1.5%	15011725	2016
	1				
	2				
	34.	90	1%	15011726	
2016	23				
	1				
	2				
23	35.	90	2%	15011727	2016
	1				
	2				
	36.				15012701
	1	2019	76		
	2				
	37.			15033301	
2007	11				
	38.		15052401	2013	53
	1				
	2				
	39.	CDMA	15052514	2009	42
	40.			15052515	2018
17	1				
	2				
	41.			15052516	2018
17	1				
	2				
	42.			15052517	2018 17
	1				
	2				
	43.			15052518	2018 17
	1				
	2				
	44.			15052519	
2018	17				
	1				
	2				

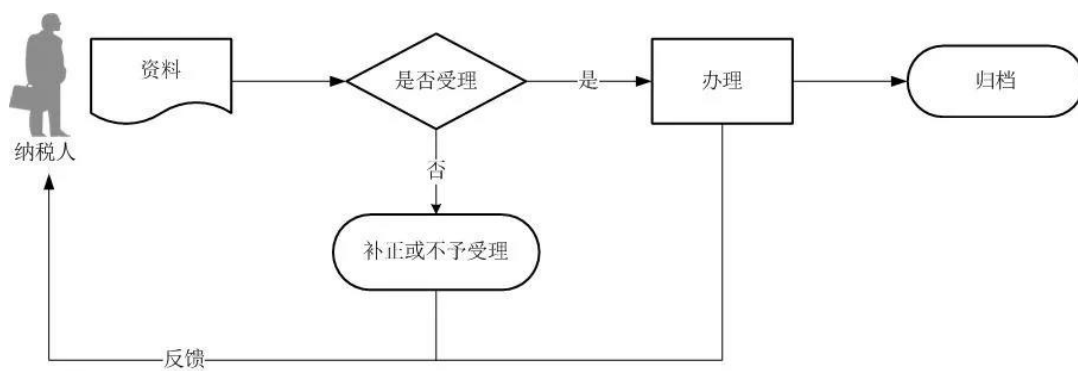
	3			
	45.		15052520	2018 17
	46.		15052521	2018
17				
	47.		15052522	2018 17
	48.		15052523	
	2018 17			
	1			
	2			
	49.		15081502	
	2003 141			
	1			
	2			
	50.		15083903	
	2000 21			
	51.			15083904
	2003 212			
	52.4			
		15083905		2013 56
	53.		15099901	
	1997 52			
	54.		15011728	2018 135
	1			
	2			
	55.		15011729	2018
135				
	1			
	2			
	56.		15011730	2018 135
	1			
	2			

57.			15101402	2001
156	2004	39		
1				
2				
58.			15092303	2017 55
59.				
		15092304	2017 55	
60.			15122601	2005 23
61.			15122602	2011 80
62.			15129902	2012
82				
63.				
	15129903			
64.			15129904	2008 24
65.			15129905	2012 82
66.			15129906	2012 82
67.			15129999	1997
52				
68.4			15129999	2003
21				
69.			15129999	
	2012	82		
70.			15129999	
2012		82		



1. " "
- 2.

" "



- 1.
- 2.
3. " "
- 4.
- 5.
- 6.
7. " "

QFII

RQFII

CEPA

2710.19                      2710.19                      (                      )                      2018                      214  
2710.19                      2019                      11                      1



21

\*                      1                      01012701                      01012716                      2016                      52  
1.                      2                      9  
1                      2                      1                      8  
2                      3                      4                      5  
2.                      01021903                      2016                      81

1	2			
2				
3.		01024103	2011	100
1	2			
2				
4.		01064017	2015	73
1	2			
2				
		"	"	
5.		01064018	2015	74
	2			
6.			01064019	2015 78
1	2			
2				
3				
		"	"	
7.		01081520	2008	5
	2			
8.			01083916	2016 36
1	2			
2				
9.		01103234	01103235	2018 38
1	2			
2				
10.		01120401	2000	102
	2			
11.		01121311	2016	36
1	2			
2				
12.		01129901	2003	86
1	2			
2				
3				
13.			04081524	2018
102				
1		2		

2  
3  
4  
5  
6

14.

05012710

1 2  
2  
3

15.

05129999

2018 55

2018 43

1 2  
2

16.

05129999

2018 55

1 2  
2  
3

17.

11011701

2008 137

2

18.

2013 101

20%

11011707

1 2  
2  
3  
4

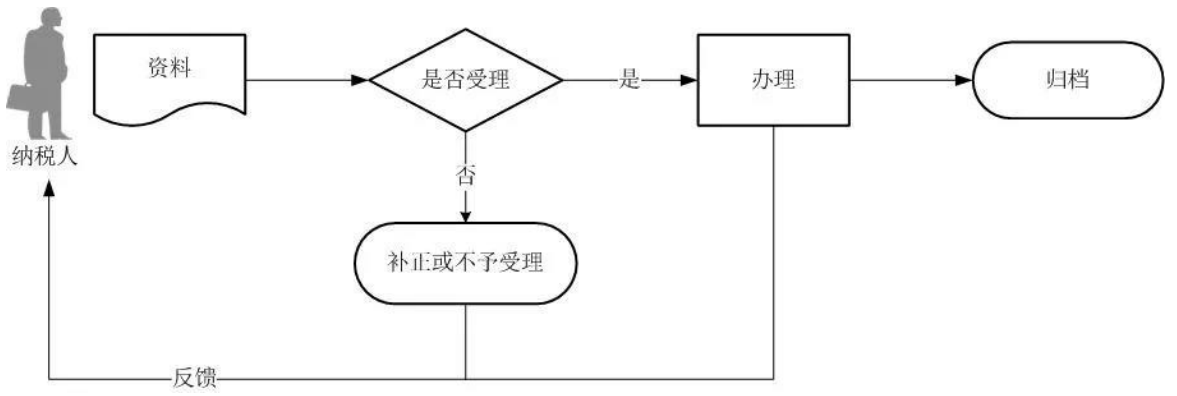
19.

11052401 11052501

3  
4

- 1. " "
- 2.

" "



- 1.
- 2. " "
- 3. " "
- 4.
- 5. " "
- 6.
- 7.
- 8.
- 9. " "



2019

2019 13  
2019 4

30 10 1 1

500

10 30

4 10 1 1 2019

30 10 30

50%

2019 13

4 10 30

4 30 10 1 1 2019

4 30 10 1 1 2019

4 " 10 1 1 2019

10 30 "

30

4 ) ( 2019 10

..... 2019 1 1 ..... 30

4 ) ( 2019 10

..... 2019 1 1 .....

4 1 1 2019

2019 8

2019

31

2019 1 1 1 1

30

500

2019

12

500

2019

4 500 12 1 1 4 1 1 2019 12 31

10

4 ..... 10 2019

2019 33 : "

..... 2020 2 1 "

2019 8 "

8

"

"

2019 3 1 "

10  
?

4 " 10 ( 2019

4 " " " 2019

2019 4 " 2019 13 10

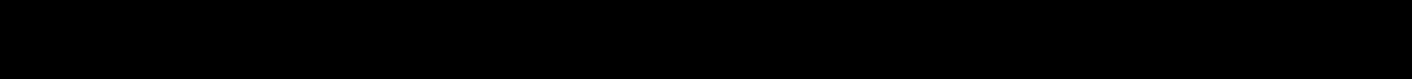
30 10 1 1 10 " 2019 13

2019 13 " 50%

4 ) " ( 2019 10

2019 1 1 .....

2016 6





5 "

3% 5%

" " "

( ) 2

12366

2019 36

2019 11 5 2019 11 10

20

70%

2



2019 11 4

2019 113

:

" "

2018 104

" " "

